



NORTHERN KENTUCKY SOLID WASTE RESOURCE GUIDE

A Publication of the Northern Kentucky Solid Waste Management Area

Boone • Campbell • Kenton

Northern Kentucky Solid Waste Management Area

Boone, Campbell, and Kenton Counties each have a Solid Waste Coordinator who oversees their County's solid waste programming, including recycling, litter abatement, household hazardous waste, and composting. The Solid Waste Coordinator (SWC) enforces their County's solid waste ordinances and handles issues regarding landfill, disposal, and illegal dumping. Additionally, the SWC provides community education and any available solid waste resources.

Boone, Campbell, and Kenton Counties together comprise of the Northern Kentucky Solid Waste Management Area (NKSWMMA). Please contact your local SWC for information on programs, special events, policies, and any additional questions on solid waste.

Learn more at www.nkyhhw.org/nkswma.

The Northern Kentucky Solid Waste Management Area is funded by the Fiscal Courts of Boone, Campbell, and Kenton Counties. The NKSWMMA is governed by the Judge Executives and one designee of each county, as well as the appointed Advisory Committee.

Boone County
Judge Executive
Gary Moore

Campbell County
Judge Executive
Steve Pendery

Kenton County
Judge Executive
Kris Knochemann

TABLE OF CONTENTS

Page 3	IMPORTANT CONTACT NUMBERS County Solid Waste Management NKSWMA Other Useful Local Entities	Page 12	HOUSEHOLD HAZARDOUS WASTE Common HHW Items
Page 4	WASTE HAULERS, LANDFILLS, & TRANSFER STATIONS Waste Haulers Landfills & Transfer Station Voucher Program	Page 13	Batteries – Single-Use & Rechargeable Household Cleaners Latex & Oil Paint
Page 5	LITTER Kentucky Revised Statutes & County Code of Ordinances Report an Illegal Dump Litter Cleanups Trash for Cash	Page 14	Pesticides & Fertilizers Prescription Drugs Needles
Page 6	COUNTY RECYCLING Accepted Items Prohibited Items	Page 15	Additional Hazardous Waste Household Hazardous Waste Collection Event
Page 7	Hefty ReNew Program	Page 16	CONSTRUCTION & YARD WASTE PAPER SHREDDING PACKAGING MATERIALS Plastic Bags
Page 8	Getting Money for Your Recyclables APPLIANCE RECYCLING	Page 17	DONATING UNWANTED ITEMS
Page 9	ELECTRONICS RECYCLING Cell Phones Ink/Toner Cartridges General Electronics	Page 18	FOOD DONATIONS & FOOD WASTE Food Donations Food Waste
Page 10	Information Technology (IT) Electronics “HARD-TO-RECYCLE” ITEMS	Page 19	EDUCATION ADDITIONAL INFORMATION
Page 11	TIRE DISPOSAL VEHICLE DISPOSAL USED OIL & OIL FILTERS		

IMPORTANT CONTACT NUMBERS

County Solid Waste Management



BOONE COUNTY
KENTUCKY

**Boone County
Solid Waste Coordinator**

Jake Buerger
Solid Waste Services Supervisor
859-334-3629

[wbuerger@boonecountyky.org](mailto:wbuenger@boonecountyky.org)
5645 Idlewild Road, Burlington

www.boonecountyky.org



CAMPBELL
COUNTY | KY

**Campbell County
Solid Waste Coordinator**

Megan Clere Abrams
Solid Waste Coordinator
859-547-1866

mclere@campbellcountyky.gov
1098 Monmouth Street, Newport

www.campbellcountyky.gov



KENTON
COUNTY

**Kenton County
Solid Waste Coordinator**

Melissa Grandstaff
Solid Waste Management Coordinator
859-392-1919

melissa.grandstaff@kentoncounty.org
420 Independence Station Road,
Independence

www.kentoncounty.org

Other Useful Local Entities

Conservation Districts

Boone County: 859-586-7903
Campbell County: 859-635-9587
Kenton County: 859-356-1019

Emergency Management (Hazard Mitigation)

Boone County: 859-334-2279
Campbell County: 859-635-1111
Kenton County: 859-392-1488

Kentucky Energy and Environmental Cabinet

Florence Regional Office
8020 Veterans Memorial Drive, Suite #110,
Florence
859-525-4923

Northern Kentucky Water District

2835 Crescent Springs Road, Erlanger
859-578-9898

Boone County Water District

2475 Burlington Pike, Burlington
859-586-6155

Public Works Department

Boone County: 859-334-3600
Campbell County: 859-635-9100
Kenton County: 859-392-1920

Sanitation District No. 1 (SD1)

1045 Eaton Drive, Ft. Wright
859-578-7450
Opt. 1 for emergencies

Cooperative Extension Services

Boone County: 859-586-6101
Campbell County: 859-572-2600
Kenton County: 859-356-3155

WASTE HAULERS, LANDFILLS, & TRANSFER STATIONS

FIRST: If you live in a subdivision or planned neighborhood, find out if there is a Homeowners Association (HOA) for your community. Often, the HOA contracts a specific waste disposal hauler for their neighborhood(s).

SECOND: If you do not have an HOA and live in a city, contact your city. Cities usually manage waste disposal for incorporated areas. This may not be the case for unincorporated city areas.

THIRD: If you live in an unincorporated area and *not in a city*, you are free to contract any local waste disposal hauler that you prefer. It is a mandatory service. For larger items, you may dispose at a local landfill or transfer station for disposal for a fee. Contact your local SWC for information on landfill vouchers and cleanup events.

Waste Haulers

Best Way Disposal
Curbside Trash & Recycling
Dumpster Rental
859-372-4900
www.bestway-disposal.com

Republic Services
Curbside Trash & Recycling
Dumpster Rental
1-800-543-1339
www.republicservices.com

Rumpke Waste & Recycling
Curbside Trash & Recycling
Dumpster Rental
1-800-828-8171
www.rumpke.com

Landfills & Transfer Stations

Bavarian Waste Landfill
12764 McCoys Fork Road, Walton
859-485-4416

Rumpke/Covington Transfer Station
4399 Boron Avenue, Covington
1-800-828-8171

Rumpke/Clermont County Transfer Depot
5180 Champions Way, Milford
1-800-828-8171

Best Way/Boone County Transfer Station
1505 Resource Drive, Burlington
859-372-4900

Rumpke/Pendleton County Landfill
1374 Bryan Griffin Road, Butler
1-800-828-8171

Rumpke/Colerain Township Landfill
3800 Struble Road, Cincinnati
1-800-828-8171

Voucher Program

Residents in each county can apply to [get a voucher to dispose of household trash and/or large items](#) that do not fit in a curbside garbage can. Applications can be found on each respective Solid Waste webpage.

LITTER

Kentucky Revised Statues & County Code of Ordinances

Commonwealth of Kentucky

- KRS 512.010 – DEFINITION OF LITTER
- KRS 512.070 – CRIMINAL LITTERING
- KRS 433.753 – CRIMINAL LITTERING ON PUBLIC HIGHWAY
- KRS 433.757 – LITTERING PUBLIC WATERS

Boone County

- Chapter 50 — SOLID WASTE
- Chapter 93 — NUISANCES

Campbell County

- Chapter 50 — SOLID WASTE
- Chapter 93 — LITTER CONTROL
- Chapter 96 — NUISANCES
- Chapter 154 — ZONING CODE

Kenton County

- Chapter 50 — SOLID WASTE
- Chapter 91 — DISCARDED ITEMS
- Chapter 130 — LITTERING
- Chapter 153 — ZONING CODE

Report an Illegal Dump

If you see a garbage pile or dumped items on someone’s property, along right-of-ways, or in a public area, please contact your local SWC or Public Works Department immediately. If you see someone in the act of dumping, call the non-emergency line (dispatch). **Illegal dumping is a criminal offense – speak up!**

Litter Cleanups



Litter is an unhealthy, harmful, and intolerable blight. It not only affects our quality of life, but also create s a negative impression of our community. It pollutes our land and water, and is detrimental to wildlife. Litter is also expensive to remove – Kentucky spends millions of dollars each year cleanup up roadways. **Littering is ILLEGAL!**

NKSWMA hosts litter cleanups and abatement programs to combat litter year-round. If you would like to learn more about how to get involved and stop litter in your community, contact your local SWC. Your SWC can work with you to plan a community litter cleanup for your neighborhood or business. **Join us for our Community Cleanups, Trash for Cash Cleanups, River Sweeps, and more!**

Trash for Cash

All NKY Counties promote the Trash for Cash Program. This program is a fundraising opportunity for local non-profit organizations to pick up roadside litter in Boone, Campbell, or Kenton County. Typical non-profit organizations include sports teams, school clubs, church groups, conservation districts, neighborhood associations, and community charities.

All supplies are provided by your County SWC, including hi-vis vests, gloves, trash bags, hand sanitizer, first-aid kits, and other safety gear. Applications can be found on each respective Solid Waste webpage.



COUNTY RECYCLING

Big Blue Bins are located throughout Boone and Kenton Counties and Rumpke Recycling bins are located throughout Campbell County for 24/7 recycling. Visit your County's Solid Waste website (located on Page 3) to see what bin is closest to you.

Accepted Items

Big Blue Bins (Boone & Kenton):

PLASTIC BOTTLES & JUGS



GLASS BOTTLES & JARS



METAL CANS



MIXED PAPER



CARDBOARD



Rumpke Recycling (Campbell):

PAPER



Cardboard should fit inside cart.

PLASTICS

Bottles, jugs, tubs and cups



Reattach lid. Yogurt and fruit cups OK.

METAL CANS & CUPS



Non-hazardous, non-flammable material only.

GLASS BOTTLES & JARS



Any color.

CARTONS



Remove caps and straws.

**Please keep plastic bags, food, yard debris, electronics, furniture, flooring, wood, plastic foam, and hazardous materials out of the bins. They contaminate the recycling bin and can cause safety issues (ex: fires, pests).*

Prohibited Items

PLASTIC PACKAGING



OTHER PLASTIC ITEMS



YARD DEBRIS



HAZARDOUS WASTE



ORGANICS



ELECTRONICS



**Dumping in and around recycling bins is illegal and will be assessed by the County SWC. Prohibited items can either be put into your trash, taken to a landfill/transfer station, or properly disposed of at a hazardous waste facility. All NKY counties have Voucher Programs with local transfer stations/landfills.*

Hefty ReNew Program

Boone, Campbell, and Kenton Counties are able to recycle even more in their curbside bins through the new **Hefty ReNew Program**. Recycle items like plastic bags, chip bags, plastic foam, and plastic utensils! All items must be secured in the orange Hefty ReNew bags—these can be purchased at your local Kroger, Target, Walmart, or other participating grocery stores. Request a FREE starter kit at www.hefty.com/hefty-renew-starter-kit.



Learn more at www.hefty.com/products/hefty-renew.

Hefty ReNew PROGRAM

Check this list for the many hard-to-recycle plastics that can go in your Hefty® ReNew™ orange bags. All items must be clean, dry and free of foil lining:



PLASTIC PACKAGING - NO FOIL LINING

- See-through chip bags
- Snack food bags
- Plastic pet food bags
- Fresh/frozen vegetable & fruit bags
- Salad bags
- Shredded cheese packages
- Cheese stick packages
- See-through granola & energy bar wrappers
- See-through candy wrappers
- See-through stand up pouches
- Dry mix liners (cake, powder mixes)
- Cereal box liners
- Cookie/cracker box liners



PLASTIC BAGS & WRAPS*

- Plastic air pillow packs
- Plastic bubble wrap
- Plastic grocery bags
- Plastic food wrap
- Food storage bags



FOAM PRODUCTS

- Foam cups, plates & bowls
- Foam to-go boxes
- Foam packing peanuts
- Foam egg cartons
- Foam block packaging



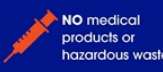
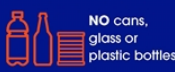
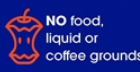
PLASTIC DINNERWARE

- Plastic straws and stirrers
- Plastic utensils
- Plastic colored cups
- Plastic plates and bowls
- Rigid plastic clear glasses



The following items ARE NOT accepted in the orange bags

NO



NO batteries or electronics

NO food, liquid or coffee grounds

NO cans, glass or plastic bottles

NO 1, 2, or 3 plastics

NO paper, cartons or boxes

NO medical products or hazardous waste

NO hoses, tubes or rope

NO foil or aluminum

*Please include plastic bags & wraps if store drop-off recycling programs are not available locally.

**In partnership with Rumpke (curbside or drop-off) only.*

Getting Money for Your Recyclables

The following companies offer money for **scrap metal and certain appliances**. Call ahead for pricing information.

Blue Grass Recycling

1575 Distribution Drive, #7300,
Burlington
859-283-9560

Can Dew Recycling

1510 Russell Street, Covington
859-261-8264

Cohen Recycling

13229 Dixie Highway, Walton
859-363-8300
5038 Beech Street, Cincinnati
513-731-7222

River Metals Recycling

1220 Licking Pike, Newport
859-291-5509

Recycling Express

Commercial: 7430 Industrial Road,
Florence
859-282-5200
Residential: 8505 Dixie Highway,
Florence
859-282-5206



APPLIANCE RECYCLING

Get rid of your broken-down appliances through Boone, Campbell, or Kenton County Solid Waste. Please remove ALL fluids and food before drop-off. Contact your SWC for more details. If you live within city limits, you may also contact your Public Services Department for additional methods.

Boone County Recycling Center

3275 Maplewood Drive, Burlington
859-334-4808

Fridays only
8 AM – 3:30 PM

Campbell County Road Department

1175 Racetrack Road, Alexandria
859-547-1866

Monday – Friday
8 AM – 2 PM

Kenton County Public Works

420 Independence Station Road,
Independence
859-392-1920

Monday – Friday
7:30 AM – 3:30 PM

\$25 fee for Freon drop-off

Blue Grass Recycling

1575 Distribution Drive, #7300,
Burlington
859-283-9560

Cohen Recycling

13229 Dixie Highway, Walton
859-363-8300
5038 Beech Street, Cincinnati
513-731-7222

Recycling Express

Commercial: 7430 Industrial
Road, Florence
859-282-5200
Residential: 8505 Dixie Highway,
Florence
859-282-5206

Can Dew Recycling

1510 Russell Street, Covington
859-261-8264

River Metals Recycling

1220 Licking Pike, Newport
859-291-5509

Tri State Escrap

6001 Dry Fork Road, Cleves
513-240-2521

www.tristateescrap.com

ELECTRONICS RECYCLING

Cell Phones

Many retailers will accept cell phones, including local cellular wireless stores, Best Buy, Altafiber, Office Depot, Staples, Target, and even the Cincinnati Zoo. Please call each location for details. *Be sure to wipe your phone by removing the SIM card before recycling.*

Ink/Toner Cartridges

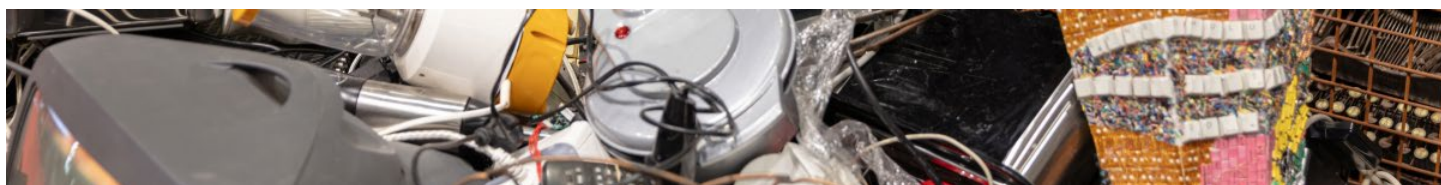
Most major office supply stores accept these items—including Best Buy, Office Depot, and Staples.

Close the Loop
Business options
859-757-1115

www.closesthe-loop.com

Cincinnati Recycling & Reuse Hub
911 Evans Street, Cincinnati
513-629-9040

www.cincinnati-recycling-and-reuse-hub.com



General Electronics

Each location accepts different items – be sure to visit their website or contact them directly beforehand. *Proper disposal is not always free, please call ahead for pricing information.*

Best Buy

100 Meijer Drive, Florence
859-525-7118

www.bestbuy.com

Cincinnati Recycling & Reuse Hub

911 Evans Street, Cincinnati
513-629-9040

www.cincinnati-recycling-and-reuse-hub.com

Reboot Electronics Reuse & Recycling

202 Conwell Street, Aurora
513-384-8277

www.rebootrecyclers.com

**Drop-off bins available*

Cleanlites Recycling

7806 Anthony Wayne Avenue,
Cincinnati
1-800-778-6645

www.cleanlites.com

Cohen Recycling

13229 Dixie Highway, Walton
859-363-8300
5038 Beech Street, Cincinnati
513-731-7222

www.cohenusa.com

Staples

7659 Mall Road, Florence
859-525-2331
400 Crossroads Boulevard,
Cold Spring
859-441-0333

www.staples.com

River Metals Recycling

1220 Licking Pike, Newport
859-291-5509

Tri State Escrap

6001 Dry Fork Road, Cleves
513-240-2521

www.tristateescrap.com

Information Technology (IT) Electronics

Information technology – *commonly known as 'IT'* – electronics can be refurbished and recycled. The following organizations are great contacts for educational institutions, local councils, professional services, financial institutions, and research firms. **Bulk pickup is available.**

Blair Technology Group

4314 Boron Drive, Suite D,
Covington
1-855-252-4784
www.blairtech.com

IT Supply Solutions

7067 Production Court, Florence
859-205-7535
www.itsuppliesolutions.com

ReGadget

4999 Houston Road, #500-1,
Florence
859-993-6911
www.regadget.com

Tri State Escrap

6001 Dry Fork Road, Cleves
513-240-2521
www.tristateescrap.com

USA Green PC

36 N Main Street, Dry Ridge
859-314-9360
www.usagreenpc.com

Reboot Electronics Reuse & Recycling hosts free 24/7 drop-off bins for most electronics. TVs are not accepted.

- **Hellmann Creative Center** (321 W Martin Luther King Jr. Boulevard, Covington)
- **Christ Church UCC** (15 S Fort Thomas Avenue, Fort Thomas)
- **Campbell County Public Library – Cold Spring Branch** (3920 Alexandria Pike, Cold Spring)
- **Pendery Park** (4113 Williams Lane, Melbourne)
- **Southern Campbell Fire Department** (1050 Racetrack Road, Alexandria)



****All electronics can be brought and disposed of for free to the Household Hazardous Waste Collection Event, typically held the first Saturday in November. Visit www.nkyhww.org for more details or contact your SWC.**



“HARD-TO-RECYCLE” ITEMS

Some items like beauty packaging, pens, k-cups, toothbrushes, chip bags, razor blades, animal feed bags, and solo cups are hard to recycle in most local recycling programs.

Cincinnati Recycling & Reuse Hub

911 Evans Street, Cincinnati
513-629-9040
www.cincinnati recycling and reuse hub.com

TerraCycle

www.terracycle.com

Mail-in programs and zero waste boxes

Hefty ReNew Program

Partnership with Rumpke only

TIRE DISPOSAL

Landfills and Transfer Stations (located on Page 4) will accept tires for a fee. **Every three years, Kentucky Division of Waste Management will host free Waste Tire Collection Events in the Northern Kentucky area** – contact your local SWC for more details. Additionally, most tire detailers will also accept tires for a fee.

Cincinnati Recycling & Reuse Hub

911 Evans Street, Cincinnati
513-629-9040

www.cincinnati-recyclingandreusehub.com



VEHICLE DISPOSAL

Goodwill

www.goodwillcars.com

Habitat for Humanity

www.habitat.org

The Salvation Army

www.satruck.org/vehicle/create

Vehicles for Veterans

www.vehiclesforveterans.org

River Metals Recycling

1220 Licking Pike, Newport
859-291-5509

*Search online for 'vehicle disposal' for additional donation options!
There are many out there.*

USED OIL & OIL FILTERS

Certain auto parts stores will accept used oil – please call the individual stores for more details.

Cooking oils should never be dumped down your drain. Oil particles clump together and form large clogs over time. You can solidify your used oils and toss them in your regular trash. Visit www.sd1.org for more information on the Fats, Oils, & Grease (FOG) Program.

Universal Environmental Services

7550 Empire Drive, Florence
859-647-9192

Environmental Enterprises

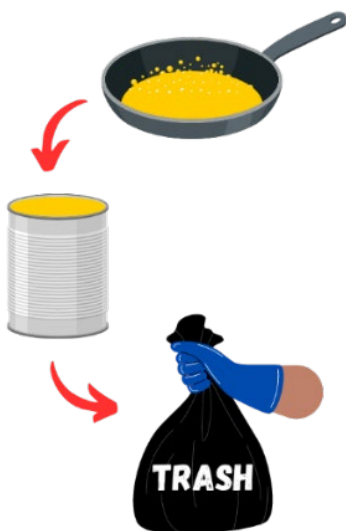
4650 Spring Grove Avenue, Cincinnati
1-800-722-2818

Cleanlites Recycling

7806 Anthony Wayne Avenue, Cincinnati
1-800-778-6645

Midwest Environmental Enterprises

27 Kiesland Court, Hamilton
513-681-9990



HOUSEHOLD HAZARDOUS WASTE

Household hazardous waste is the group of materials that are commonly found in homes but actually require special attention when being discarded. *Keep in mind, the best disposal method is to use up the item as it is intended until it is empty.* **Please note that most organizations charge for disposal.**

Common HHW Items

ELECTRONICS: TVs/CRTs, flatscreen TVs, large projection TVs, LCD monitors, cell phones, laptops, printers, PCs, ink/toner, e-cigarettes, batteries, and mixed electronics.

Batteries: Li-ion (lithium), NiCad (nickel-cadmium), NiMH (nickel metal hydride), lead-acid, battery jumper packs, dry cells.

***Alkaline (AAA, AA, B, C, D, 9V) are not accepted. They are safe to throw in the regular household trash.*

Mixed electronics: Think "anything that takes a battery or has a cord" for this category. Examples include blenders, remote controls, keyboards, mice, headphones, cables, chargers, lamps, speakers, game controllers, watches, cameras, drones, kitchen appliances (no large appliances like refrigerators), gaming systems, tablets, iPods, radios, GPS, power tools, flashlights, bulbs, string lights.

AEROSOL CANS: spray paint, window cleaners, bug repellents, degreasers, car cleaners, disinfectant sprays, sunscreen, hairspray, deodorant, cooking spray, air fresheners.

HOUSEHOLD CLEANERS: glass, all-purpose/multi-surface, bathroom/toilet, degreaser, laundry, heavy duty, specialty cleaners, polish.

***The best way to dispose of cleaners is to simply use them up for its intended purpose.*

PESTICIDES & POISONS: herbicides, insecticides, rodenticides, fungicides, biopesticides, pool chemicals, bleach, disinfectants, mold/mildew cleaners, thermometers (mercury).

CORROSIVES, FLAMMABLES, & FUELS: fuel, antifreeze, used oil, oxidizers, reactive solids, pocket lighters, oil filters, organic peroxide, corrosive acids/bases, flammable liquids/solids.

Corrosive acids/bases: nitric acid, hydrochloric acid, sulfuric acid, phosphoric acids, chromic acid, sodium hydroxide (lye), potassium hydroxide, ammonium hydroxide (ammonia), hydrogen peroxide, calcium hydroxide (lime).

Flammable liquids/solids: acetone (nail polish remover), gas, ethanol, isopropyl, turpentine, kerosene, magnesium powder, aluminum powder, metallic hydrides.

***Ammunition, fireworks, explosives, nitrocellulose are not accepted at our events. Call the vendor directly to confirm they accept these items.*

CYLINDERS & TANKS: oxygen, helium, propane, freon, carbon dioxide, methylacetylene-propadiene propane (MAPP), nitrous oxide, nitrogen/argon, fire extinguishers.

***Commercial-grade gases like isocyanate, polyol, acetylene are not accepted at our events. Call the vendor directly to confirm they accept these items.*

SMOKE DETECTORS: battery, hardwired, combination smoke/CO.

LIGHT BULBS: fluorescent tube bulbs, compact fluorescent lamps (CFLs), LED, non-PCB ballasts, PCB light ballasts.

***Incandescent and halogen bulbs are safe to throw in the regular household trash.*

Batteries – Single-Use & Rechargeable

Single-use alkaline batteries (AA, AAA, 9V, D) are generally OK to put in your household trash. For more protection, tape the ends with Scotch tape or place in a plastic bag. **Lithium-ion batteries (typically in electronics, including e-cigarettes) should never go in your household trash and should be properly disposed**, as they will explode and cause fires. See General Electronics (located on Page 9) for additional disposal methods. *Lithium-ion batteries can be dropped off at participating fire departments:*

Central Campbell Fire Department
4113 Alexandria Pike, Cold Spring

Fort Wright Fire Department
409 Kyles Lane, Fort Wright

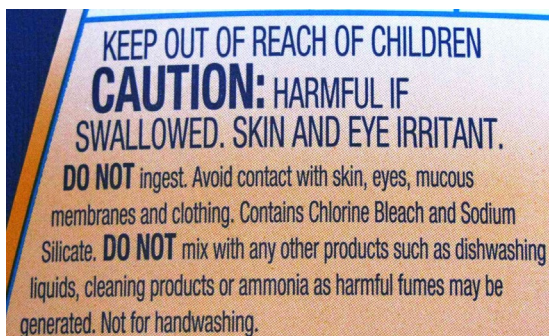
Ludlow Fire Department
234 Oak Street, Ludlow

This program is in partnership with the Cincinnati Recycling & Reuse Hub and Rumpke Waste & Recycling.

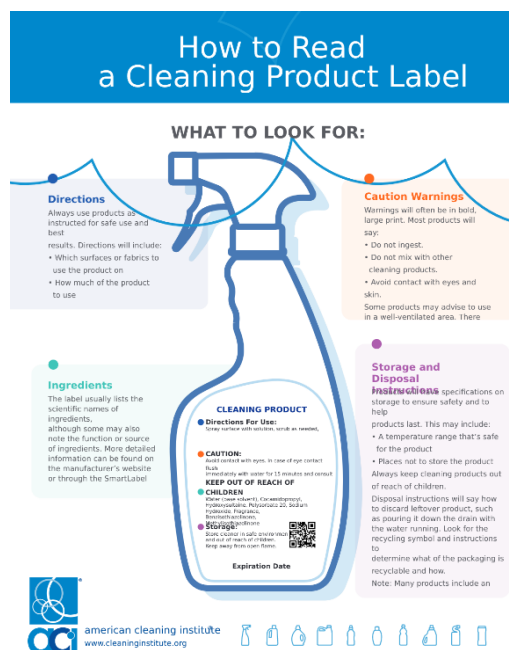
Household Cleaners

Check the label before disposal. If water-soluble and OK to flush down the drain, do so. If still usable, full, and not mixed, consider donating (located on Page 13).

NEVER mix cleaners, as they can and will produce toxic gases.



Source: American Cleaning Institute



Latex & Oil Paint

Certain paint will last up to 20 years and can be donated to organizations. **Latex paint (including paint thinner) is not considered hazardous** and can be dried out to put in household trash. For large amounts, mix in paint hardener, cat litter, concrete mix, or something similar. **Oil paint contains toxic chemicals** and should be properly disposed of.

Cleanlites Recycling
7806 Anthony Wayne Avenue, Cincinnati
1-800-778-6645

Matthew 25 Ministries
11060 Kenwood Road, Blue Ash
513-793-6256

Latex paint donations

Environmental Enterprises
4650 Spring Grove Avenue, Cincinnati
1-800-722-2818

Midwest Environmental Services
27 Kiesland Court, Hamilton
513-681-9990

Pesticides & Fertilizers

Pesticides should never go down the drain or in a landfill, as their residues can cause serious harm. If able, use them up before disposing. *The Kentucky Department of Agriculture hosts a free pesticide collection for farmers.*

Kentucky Department of Agriculture
Office for Consumer & Environmental Protection
Program
502-573-0282
www.kyagr.com/consumer

Environmental Enterprises
4650 Spring Grove Avenue, Cincinnati
1-800-722-2818

Prescription Drugs

Certain medications should never be flushed, as it can affect local soil and water. There are two ways to dispose of expired medication:

1. **Drug disposal pouches:** This specialized pouch de-activates medication and are available at the Northern Kentucky Health Department. Visit www.nkyhealth.org for more information.
2. **Medication drop-boxes:** Most sheriff and police departments have medication drop-boxes for unneeded or expired medications. *They will not accept liquid medication, vitamins, supplements, needles, asthma inhalers, mercury thermometers, iodine-containing medication, or illegal drugs/substances (including marijuana).*
3. **DEA's National Prescription Take Back Day:** The Drug Enforcement Administration (DEA) offers Take Back Days throughout the year. Visit www.dea.gov/takebackday for more information. *Vaping devices are accepted at this event, but lithium-ion batteries must be removed first.*



Needles

Place used needles in either a Sharps container (provided by most pharmacies) or a rigid plastic #2 laundry detergent bottle, duct tape the lid shut, and dispose with household trash. **Sheriff and police departments will not accept needles.**

Stericycle
Sharps Mailback Program
1-855-703-1916
www.stericycle.com



Additional Hazardous Waste

If you have something not already mentioned in this guide, reach out to your local SWC or contact the organizations below for assistance.

Cleanlites Recycling
7806 Anthony Wayne Avenue,
Cincinnati
1-800-778-6645

Environmental Enterprises
4650 Spring Grove Avenue,
Cincinnati
1-800-722-2818

Midwest Environmental Enterprises
27 Kiesland Court, Hamilton
513-681-9990



Household Hazardous Waste Collection Event

The Northern Kentucky Household Hazardous Waste Action Coalition is dedicated to spreading awareness of the proper disposal and recycling of household hazardous waste.

The **Household Hazardous Waste (HHW) Collection Event** is typically the first Saturday of November each year, located at the Thomas More Stadium (Home of the Florence Y'alls) in Florence. The HHW Collection is FREE for Boone, Campbell, and Kenton County residents. There are certain limitations and guidelines. More information can be found at www.nkyhww.org or by contacting your local SWC.

Accepted items: aerosol cans, antifreeze, batteries (all types), corrosives/flammables, electronics, ink/toner cartridges, oil, light bulbs, oil paint (10 can limit), pesticides, tanks/cylinders, and TVs (limit of two).

Prohibited items: latex paint, appliances, fertilizers, mercury-containing devices, medications, tires, or paper.

More information online at www.nkyhww.org



CONSTRUCTION & YARD WASTE

Construction waste can include concrete, steel, wood, asphalt, and more. Yard waste includes dirt branches, and tree debris. See Landfills and Transfer Stations (located on Page 4) for additional disposal methods.

Affordable Landscape Supplies

Yard waste

4346 Bullittsville Road, Burlington
859-903-0022

Cincinnati ReUse Center

Reusable building materials

1530 Tremont Street, Cincinnati
513-921-0111

H. Hafner & Sons

Construction and yard waste

5445 Wooster Road, Cincinnati
513-321-1895

Habitat for Humanity ReStore

Gently-used building material

8309 US-42, Florence
859-371-0038

Newtown Fill Ltd.

Construction waste

7960 Main Street, Cincinnati
513-271-8540

Ohio Mulch

Yard waste

5519 North Bend Road, Burlington
859-586-1173

PAPER SHREDDING

Boone County Recycling Center

During certain events

3275 Maplewood Drive, Burlington
859-334-3151

Office Depot

Various locations

Document Destruction

4511 Reading Road, #1229,
Cincinnati
513-772-1114

Staples

Various locations

Shred-It

1-866-593-9280
www.shredit.com

PACKAGING MATERIALS

Packing peanuts and other expanded polystyrene (EPS) are among the most common sources of litter and are often mistaken as viable food by birds and fish. EPS can take thousands of years before breaking down. Other plastic materials, like bubble wrap and air pillows, can take hundreds of years.

Eco Development

EPS only

4219 US-42, Mason
513-336-0777

Cincinnati Recycling & Reuse Hub

911 Evans Street, Cincinnati
513-629-9040

www.cincinnati recycling and reuse hub.com

FedEx

Various locations

Hefty ReNew Program

Through Rumpke curbside or
drop-off recycling

Grocery Stores

Plastic bags, bubble wrap, air pillows, etc.
Various locations

UPS

Various locations

Plastic Bags



Certain convenient, grocery, and retail stores have a barrel in the front of the store to recycle single-use plastic bags. These stores utilize companies like Novolex, How2Recycle, and Beyond the Bag (Closed Loop). Some stores include Kroger, Meijer, Dick's Sporting Goods, Walgreens, Walmart, Target, and Kohl's. **Next time you are going to the store, be sure to check out the recycling options in the front!** The Hefty ReNew Program also accepts these items (located on Page 7).

DONATING UNWANTED ITEMS

There are many ways to get rid of unwanted items, some even paying you in the process. Unwanted items can include clothing and footwear, furniture, toys, household cleaners, and building material. By donating or selling your items, you are giving them a second life and diverting from landfills. Some ways include:

- Phone apps: Depop, Poshmark, ThredUP, Etsy, etc.
- Facebook Marketplace
- eBay
- Craig's List Cincinnati
- Yard sales
- Clothing donation bins
- Local secondhand stores and charity organizations

Secondhand stores and charity organizations are easy ways to get rid of items without the hassle of shipping. Before donating or selling items at the organizations below, please be aware that each location has different item guidelines, most-needed items wishlists, drives, operating hours, and drop-off times. More information can be found on their individual websites. Here are some local ones to the Tri-State:

Be Concerned

General household items
1100 Pike Street, Covington
Erlanger United Ministries
525 Graves Avenue, Erlanger
859-727-0300
www.beconcerned.org

Goodwill

General household items
Various locations
www.goodwill.org

Plato's Closet & Once Upon A Child

Gently-used clothing
7941 Mall Road, Florence
859-282-9800
www.platosclosetflorence.com
www.onceuponachild.com/locations

Brighton Center

General household items
Various locations
www.brightoncenter.com

Helping Hearts

General household items
7199 Turfway Road, Florence
www.helpingheartsnky.org

St. Vincent de Paul

General household items
Various locations
www.svdpnky.org

Emergency Shelter of NKY

General household items
436 W 13th Street, Covington
859-291-4555
www.emergencyshelternky.org

Northern Kentucky Community Action Commission

Collection drives
Various locations
859-581-6607
www.nkyfamilypromise.org

The Salvation Army

General household items
Various locations
www.satruck.org

Fairhaven Rescue Mission

General household items
260 Pike Street, Covington
859-491-1027
www.fairhavenmission.org

Master Provisions

Gently-used clothing, bed sheets, towels
7725 Foundation Drive, Florence
859-474-0467
www.masterprovisions.org

Vietnam Veterans of America

General household items
1-800-535-3834
www.vva.org

Family Promise NKY

General household items
336 W 9th Street, Newport
859-360-0905
www.nkyfamilypromise.org

Matthew 25 Ministries

General household items
11060 Kenwood Road, Cincinnati
513-793-6256
www.m25m.org

Welcome House

General household items
1132 Greenup Street, Covington
859-431-8717
www.welcomehousenky.org

FOOD DONATIONS & FOOD WASTE

Food Donations

Before donating items, please be aware that each location has different item wishlists, drives, operating hours, and drop-off times. More information can be found on their individual websites.

Be Concerned

General household items
1100 Pike Street, Covington
Erlanger United Ministries
525 Graves Avenue, Erlanger
859-727-0300
www.beconcerned.org

Brighton Center

General household items
Various locations
www.brightoncenter.com

Northern Kentucky Community Action Commission

Various locations
859-581-6607
www.nkyfamilypromise.org

Master Provisions

Gently-used clothing, bed sheets, towels
7725 Foundation Drive, Florence
859-474-0467
www.masterprovisions.org

Matthew 25 Ministries

General household items
11060 Kenwood Road, Cincinnati
513-793-6256
www.m25m.org

St. Vincent de Paul

General household items
Various locations
www.svdpnky.org

Welcome House

General household items
1132 Greenup Street, Covington
859-431-8717
www.welcomehousenky.org

Food Waste

Food waste that ends up in a landfill decomposes and releases carbon dioxide and methane. Methane is over 20x more potent than carbon dioxide and is considered to be a powerful greenhouse gas (GHG). To decrease this GHG, we can divert food waste and give it a new life: compost! Compost can easily be done in our own backyards and used for growing our own food or plants. Contact your local SWC for more information.

Residents in Campbell County are eligible to receive a free compost bin and educational information. Contact the UK Campbell County Cooperative Extension Service (located on Page 3) for more information.

Queen City Commons

Compost Drop-Off*

@queencitycommons

lets.talk@queencitycommons.com

www.queencitycommons.com

*Only certain NKY communities



Source: MSW Plant

EDUCATION

Your SWC has a wealth of information to share with you! They are available to give presentations to schools, civic groups, churches, camps, and anyone else. Your SWC can discuss any subject related to solid waste, including recycling, composting, waste reduction, household hazardous waste, and litter. Please contact your local SWC if you are interested in any programs, wish to schedule a presentation, or need additional information.

ADDITIONAL INFORMATION

Solid Waste programs are funded by not only each County's Fiscal Court, but also grants received from Kentucky Division of Waste Management. This includes the following grants:

- Litter Abatement
- Recycling
- Household Hazardous Waste
- Composting
- Illegal Open Dump
- Crumb Rubber
- Rubber-Modified Asphalt
- Waste Tire

For more information on Solid Waste, please visit your County's Solid Waste webpage or visit Kentucky Division of Waste Management's webpage:

<https://eec.ky.gov/Environmental-Protection/Waste/recycling-and-local-assistance/Pages/default.aspx>.



BOONE COUNTY
KENTUCKY

Boone County
Solid Waste Coordinator

Jake Buerger
Solid Waste Services Supervisor
859-334-3629

wbuerger@boonecountyky.org
5645 Idlewild Road, Burlington

www.boonecountyky.org



CAMPBELL
COUNTY | KY

Campbell County
Solid Waste Coordinator

Megan Clere Abrams
Solid Waste Coordinator
859-547-1866

mclere@campbellcountyky.gov
1098 Monmouth Street, Newport

www.campbellcountyky.gov



KENTON
COUNTY

Kenton County
Solid Waste Coordinator

Melissa Grandstaff
Solid Waste Management Coordinator
859-392-1919

melissa.grandstaff@kentoncounty.org
420 Independence Station Road,
Independence

www.kentoncounty.org

The NKSWMA and this Resource Guide do not seek to endorse or promote any company. The listings are provided as a service to inform the public of proper disposal and recycling options. Anyone with suggestions, additions, or corrections, please contact your local SWC.